

How to Enroll

Enrollment

1. Decide that you would like to join the CCP and that New River Health is the primary care provider you will work with to coordinate your care.
2. Complete and sign the enrollment form (available at our reception desk) and return it by mail to PEIA at the address listed on the enrollment form, or return it to our receptionist when complete.
3. You will then receive your CCP member card and be contacted for a brief health history survey either by mail or by telephone.

Please note: *The CCP may not be for you if you wish to continue to use a specialist for the majority of your primary health care.*

Dis-enrollment is also easy. If you wish to return to the conventional PEIA program, just contact Member Services at PEIA or ask New River Health's receptionist for a PEIA CCP Dis-Enrollment Form. Once signed and returned, you will be placed back on PEIA's conventional plan at the beginning of the next month following the month in which your form was received.

Members may be dis-enrolled from the CCP program and returned to conventional PEIA if there is a pattern of use of other primary care providers or multiple specialists without consultation with New River Health.

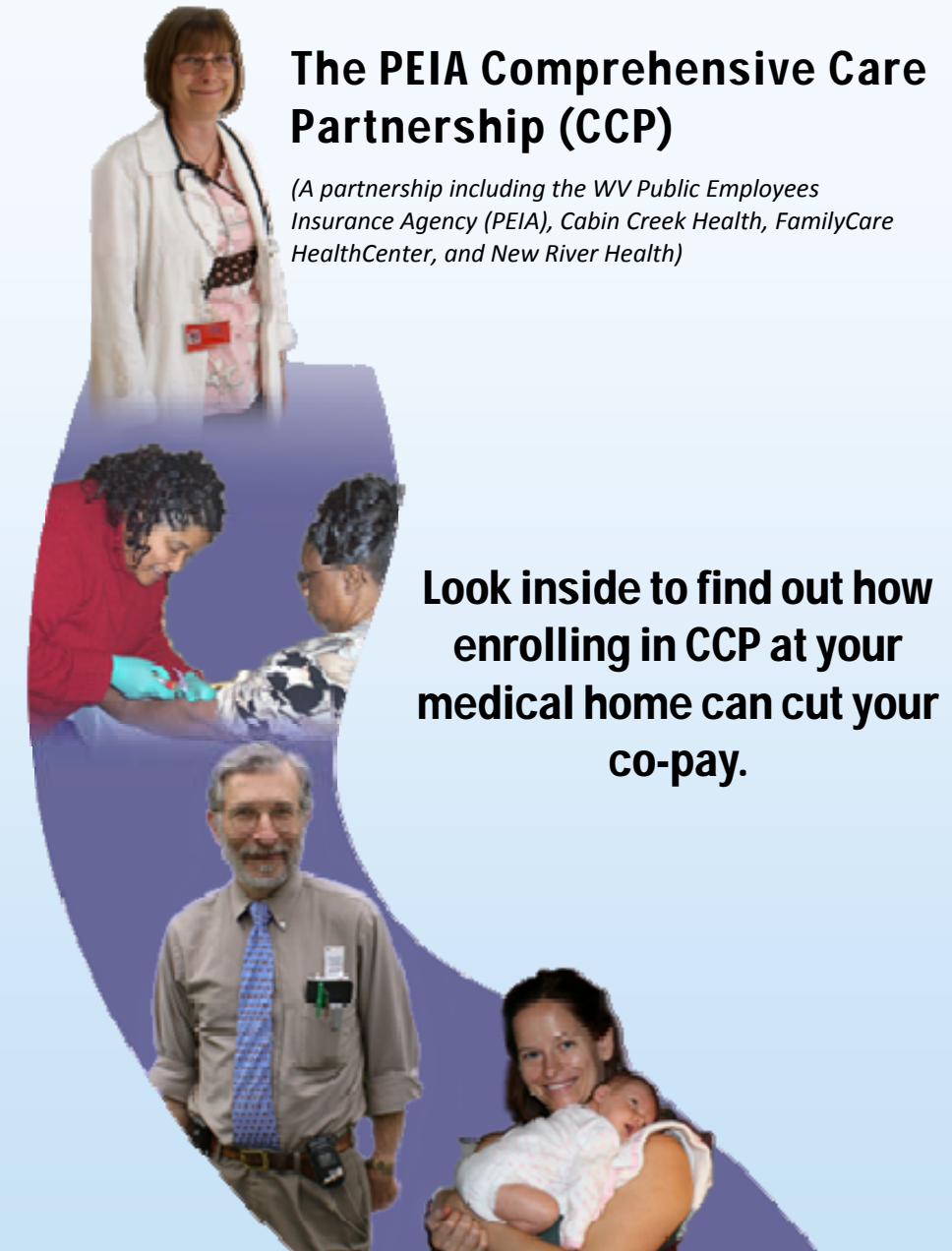
Questions?

Call New River Health at **(304) 469-2905**

The PEIA Comprehensive Care Partnership (CCP)

(A partnership including the WV Public Employees Insurance Agency (PEIA), Cabin Creek Health, FamilyCare HealthCenter, and New River Health)

Look inside to find out how enrolling in CCP at your medical home can cut your co-pay.



If you have health coverage through PEIA you can now choose to join the Comprehensive Care Partnership (CCP).

Joining the CCP means:

- **No co-payments** for medical visits
- **No co-payments** for generic prescriptions (and brand name prescriptions are only \$10)
- **Same day** appointments for urgent care
- **Regular health exams**

CCP members choose their Medical Home and Co-Payments are Cut!

The PEIA member who joins the Comprehensive Care Plan (CCP) chooses to receive almost all of their primary health care from New River Health. New River Health is responsible for providing prevention services, routine sick care, and for coordinating care with specialists when you need them.

The CCP member will have **NO co-payments** for primary care services at New River Health and **NO co-payments** for generic prescription medications received through New River Health's pharmacy. Also, CCP members pay only \$10.00 for brand name prescription medications.



How this program works

The Roles of the Partners

The success of the program requires a working partnership that includes your medical home/health center, PEIA and YOU.

Your Health Center's Role

- To be available to see you when you are sick and to remind you when you need services to protect your health.
- To provide 24 hour access by telephone to a medical provider on call.
- To coordinate your care with medical specialists who may be involved in your care.

PEIA's Role

- To enroll members.
- To pay a monthly retainer for health services to your medical home.
- To monitor and report on the quality of health services.

YOU (Your role as a member)

- Use New River Health for your primary health care services.
- Contact New River Health before receiving medical care from outside sources, except in the case of emergency.
- Participate in an initial and regular health planning sessions so that your health condition is understood and so that you and your provider can agree on your healthcare goals.